

Yokohama & Kawasaki
Yokohama City
 Tourist Attraction No.
2587

<Amusement>

New and enjoyable experiences to try in
 Yokohama Station

ASOBUILD

Explanation of
 Tourist Attraction

ASOBUILD was born from the concept of "a building near the station where one can play". This is a dynamic experience-entertainment building that is directly connected to the southeast exit passage of Yokohama Station. From the 1st basement floor to the 4th floor, as well as the rooftop, this complex provides six floors' worth of unique experiences. There are hands-on and craftsmanship activities offered, as well as a kids' park, sports facilities, restaurants, and bars.

selling point

There is a wide range of experience-based activities, some of which are periodically changed. One of the charms of ASOBUILD is that whenever you go, or how many times you go, you can still have fun.

Address	ASOBUILD, 2-14-9 Takashima, Nishi-ku, Yokohama-shi, Kanagawa-ken
Opening Hours	10:00-22:00 (Depends on the floor)
Availability of Parking	Unavailable
URL	https://asobuild.com/en/

Recommended Season

All year

Group/Individual Mark

Group Individual

Target Regions

Europe, North America, Oceania, Asia

Access

2 min walk from Yokohama Station(Each Line) East Exit

Specific Model Route Details

Individual

JR Line [Tokyo Station] +++(30 min) +++ JR Line [Yokohama Station] ...Walk (18 min) ... Yokohama City Central Wholesale Market (120 min) ...Walk (15 min) ... Shopping at Bay Quarter Yokohama (90 min) ...Walk (5 min) ... ASOBUILD (180 min) ...Walk (2 min) ... JR Line [Yokohama Station]

Start Tokyo Station

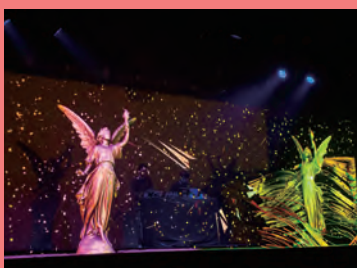
Goal Yokohama Station

Time Required 8 hours



Nearby Sightseeing Spot

DMM VR THEATER



There is a visual x music collaboration event "VRDG+H" held with HIP LAND MUSIC.

The world's first permanent holographic projection theater. The cutting-edge stage with 3D images is the best part!

Gyu Nabe (Beef Hotpot)



Gyu Nabe (beef hotpot) is said to represent the roots of the famous sukiyaki dish, and it originated in Yokohama together with the spread of civilization and enlightenment throughout Japan. This restaurant is a well-established spot in Yokohama, having been founded more than one-hundred years ago, and the cuisine it serves enables customers to taste traditional flavors.

