

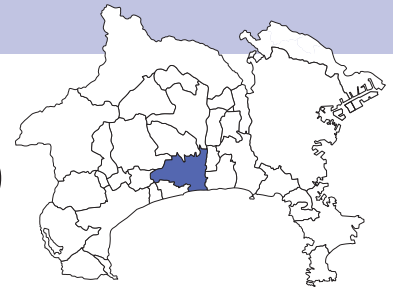
Shonan
Hiratsuka City

Tourist Attraction No.

879

<Industrial Tourism / Japanese Culture>

Exhibiting a century of lacquerware masterpieces

NAMIKI Makie Workshop
(Pilot Corporation)Explanation of
Tourist Attraction

The Pilot Corporation got its start selling maki-e (lacquerware with gold-powder patterns) fountain pens in 1926, founding the Kokkokai with Living National Treasure-designated artist Gonroku Matsuda in the lead to carry on the traditions of the ancient Japanese craft of maki-e over the next century. In order to convey this history to the public, the brick Hiratsuka Navy Ammunitions Arsenal building, a part of modern-period Hiratsuka City history, was renovated for use as an exhibition space. In addition to lacquerware crafted by important figures designated as Living National Treasures, including Naoji Terai (maki-e artist), Yoshikuni Taguchi (maki-e artist) and Fumio Mae (chinkin gold-powder-inlaid lacquerware artist), this exhibition facility features maki-e fountain pens, boxes, picture frames and more from the Taisho Period (1912–26) onward. Other items, such as Pilot Corporation posters, are also on display for a total of about 100 exhibition pieces.

selling point

About 100 pieces on display, including those by artists honored as Living National Treasures

| | |
|-------------------------|----------------------------------------------------------------------------------------------------------------------------------------------------------------------------------------------------------------------------------------------------------------------------------------------------------------------------------|
| Address | Pilot Corporation Hiratsuka Office, 1-4-3 Nishiyawata, Hiratsuka-shi, Kanagawa |
| Opening Hours | Open Mon.-Fri., 10:00 am to 12:00 pm, 1:00 pm to 4:00 pm (Reservations required to view facility) Closed on weekends and national holidays, during the New Year holiday period and summer break, and on the anniversary of the company's founding (Oct. 1)(Facility may be closed on other days as determined by the company) |
| Availability of Parking | — |
| URL | http://www.pilot.co.jp/ |

Recommended Season

All year

Group/Individual Mark



Group



Individual

Target Regions

Europe, North America, Oceania

Access

From Hiratsuka Station on the JR Tokaido Line
Bus: take a bus from boarding point 4 of the north exit bus terminal, get off at Sogo Koen bus stop and walk for 1 minute.
(all Kanachu buses from boarding point 4, except #67 bound for Tamura Soko, stop at Sogo Koen)
On foot: approx. 20 minutes from the station's west exit

Specific Model Route Details

Individual

JR Line (Yokohama Station) +++ (30 minutes) +++ JR Line [Hiratsuka Station] === (6 minutes by bus) === Namiki Makie Workshop ... (20 minutes) ... Arai Daruma Store (Daruma Painting experience) ... (20 minutes) ... The Hiratsuka Museum of Art ... (10 minutes) ... Hachimanyama no Yokan ... (15 minutes) ... Tanabata decorations in Hiratsuka Station ... JR Line [Hiratsuka Station] +++ JR Line [Yokohama Station]

Start

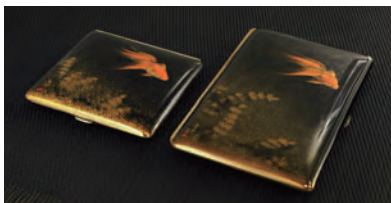
JR Line Yokohama Station

Goal

JR Line Yokohama Station

Time Required

5 hours



Nearby Sightseeing Spot

Arai Daruma Store (Daruma Painting experience)



Each daruma doll is made carefully by hand, following ancient traditions with a focus on the concept of fueki-ryuko (preserving the old while integrating it with the new). Arai Daruma-ya staff preserve traditional teachings which tell them to create daruma dolls with gratitude in their hearts. Reservations required.

Shonan Daira Hills (Komayama Park)



The observation deck offers a 360-degree panoramic view of the surrounding area, and on clear days it is possible to see Mount Fuji and even TOKYO SKYTREE in the distance. This spot is particularly famous for its gorgeous night views. The park also hosts an observatory-style restaurant, where visitor can enjoy the scenery while dining on dishes made using locally caught fish, Shonan-region vegetables and more.

