

Yokohama & Kawasaki
Yokohama City
 Tourist Attraction No.
298

<Drama · Anime>

Pokémon Official Shop

Pokémon Center Yokohama

Explanation of
 Tourist Attraction

Pocket Monster, a.k.a. "Pokémon" is one of the popular games & anime series representing Japan. This is the official shop. They sell over 2,500 items including games, cards and related goods. At the Pokémon casual shop, "Pokémon Store", there is a line up of Pokémon Center's popular items and visitors can enjoy shopping in the world of Pokémon. There are original goods you can only get here, as well as a gaming section your family can enjoy. If you visit during the month of your birthday, you will receive a lot of gifts!

selling point

You can purchase original items such as plush dolls here at the Pokémon Center.

| | |
|-------------------------|---|
| Address | Marui city Yokohama 8F, 2-19-12, Takashima, Nishi-ku, Yokohama |
| Opening Hours | 10:30am to 20:30pm |
| Availability of Parking | Available (capacity 400 vehicles) |
| URL | http://www.pokemon.co.jp/gp/pokecen/yokohama/ |

Recommended Season

All year

Group/Individual Mark

Group Individual

Target Regions

Asian (Family)

Access

- 3 mins walk from Yokohama station (JR)
- 5 mins walk from Yokohama station (Minatomirai Line)

Model Route No. **123** Specific Model Route Details

Individual

Various Tokyo areas === (car) ===
 Yokohama Anpanman Kid's Museum & Mall === Pokémon Center Yokohama
 === Animate Yokohama === Hotels
 (Within Yokohama District)

Start Tokyo (various areas)

Goal Tokyo (various areas)

Time Required 4 hours



©2020 Pokémon. ©1995-2020 Nintendo/Creatures Inc. /GAME FREAK inc.
 Pocket Monster, Pokémon, Pokemon is an official registered brand of Nintendo, Creatures, and Game Freak.

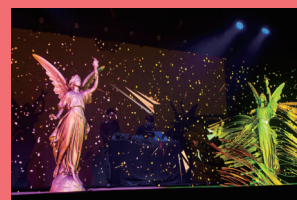
Nearby Sightseeing Spot

Rokkubashi Shopping District (Dokkiri Yami Ichiba)



This is a retro-style shopping arcade from the Showa era. "Dokkiri Yami Ichiba" is held nightly on every third Saturday of each month from April through October. You can enjoy various events such as a flea market, live performances and "Shopping Center Pro-Wrestling"

DMM VR THEATER



It is the world's first permanent holographic projection theater.

There is a visual x music collaboration event "VRDG+H" held with HIP LAND MUSIC.

