

Great access from Tokyo!

Free Paper
In English

KANAGAWA GUIDE BOOK

Come experience the numerous
attractions of Kanagawa!

OYAMA



JOGASHIMA
& MISAKI



TOKYO

KANAGAWA

OYAMA

OISO

JOGASHIMA
& MISAKI

OISO



Let's travel around Kanagawa for one night stay!

JOGASHIMA & MISAKI YOKOHAMA



A view of Mt. Fuji from Jogashima

Model route

Day 1	Day 2
Haneda Airport International Terminal Station	Misakiguchi Station
Train	Bus
Misakiguchi Station	6 Misaki Asaichi
Bus	On foot
1 Traditional Tairyo-bata Dyeing	7 Tuna market trade viewing
On foot	On foot
lunch	8 Urari Marché
In the surrounding area of Misaki Port	Bus
On foot	Misakiguchi Station
2 Jogashima Ferry "Sanshiro"	Train
Ferry	Motomachi-Chūkagai Station
3 J's Fishing	On foot
On foot	lunch
4 Jogashima Hiking Course	9 Yokohama China Town
On foot	Train
5 Jogashima Park	10 Minato Mirai 21
Bus	On foot
Misakiguchi Station	Minatomirai Station
Train etc.	Train
Accommodation	Haneda Airport International Terminal Station
Miura City Area	



6 Misaki Asaichi (Morning Market)

Best place to buy Misaki's fresh seafood! This market sells vegetables, fruits and locally-produced eggs as well as tuna.

- ☎ 046-881-4488 🕒 5:00 – 9:00 (Open only Sundays)
- 📍 5-3806 Misaki, Miura
- 🚌 About a 6-minute walk from "Misaki-kou (Misaki port)" bus stop by taking a bus from Misakiguchi Station on the Keikyu Line



7 Tuna market trade viewing (Misaki Fish Market)

Auctions for tuna and other fish are held every day except for the closed dates of the building. It is a magnificent view to see plenty of tuna laid side by side on the floor. There is also an eatery inside the market.

- ☎ 046-882-1111 🕒 [Viewing] From 8:00 to around 9:30
- 📍 5-245-7 Misaki, Miura [Eatery] From 6:00 (Closed Wednesdays)
- 🚌 About a 5-minute walk from "Misaki-kou (Misaki port)" bus stop by taking a bus from Misakiguchi Station on the Keikyu Line

JOGASHIMA & MISAKI Enjoy a Michelin 2-starred superb view and fine food



1 Traditional Tairyo-bata Dyeing (Mitomi Somemonoten)

A well-established store with a long history of traditional technique from the Edo period to finish the dyeing of Tairyo-bata (the big flag that the fish boat uses when coming back with a big catch of fish) by hand. Visitors can experience dyeing a mini Tairyo-bata.

- ☎ 046-881-2791 (Reservation required by two days in advance for dyeing workshop)
- 🕒 8:00 – 20:00 (No scheduled holidays)
- 📍 1-10-9 Misaki, Miura
- 🚌 About a 1-minute walk from "Hinode" bus stop by taking a bus from Misakiguchi Station on the Keikyu Line
- 💰 From 3,500 JPY (Dyeing workshop fee)



2 Jogashima Ferry "Sanshiro"

A ferry to connect "Misaki Port" with Jogashima by about 5 minutes. Visitors are allowed to take their bicycles on a ferry.

- 🕒 10:00 – 15:00 (Operates every 30 minutes)
- 📍 Boarding point
- 1. "Urari Marché" Pier (About a 2-minute walk from "Misaki-kou (Misaki port)" bus stop by taking a bus from Misakiguchi Station on the Keikyu Line)
- 2. J's Fishing (About a 1-minute walk from "Jogashima" bus stop by taking a bus from Misakiguchi Station on the Keikyu Line)
- 💰 Adult 500 JPY, Child 300 JPY



3 J's Fishing

At Jogashima sea fishing pond visitors don't need to bring anything and beginners are also welcome.

- ☎ 046-854-9891
- 🕒 9:00 – 16:00 (Closed on Tuesdays and New Year's Holiday)
- 📍 650-70 Misakimachi Jogashima, Miura
- 🚌 About a 1-minute walk from "Jogashima" bus stop by taking a bus from Misakiguchi Station on the Keikyu Line
- 💰 Please ask beforehand.



8 Urari Marché

This facility provides several sightseeing contents including Sanchoku Center for fresh Miura vegetables and Misaki tuna and underwater sightseeing ship.

- ☎ 046-881-6721 🕒 9:00 (7:00 on Sundays) – 17:00 (Open every day)
- 📍 5-3-1 Misaki, Miura
- 🚌 About a 2-minute walk from "Misaki-kou (Misaki port)" bus stop by taking a bus from Misakiguchi Station on the Keikyu Line



4 Jogashima Hiking Course

It is about a 20-minute walking course to cover east and west sides of Jogashima. Visitors can enjoy nature fully.



5 Jogashima Park

This park is located on the eastern half of the island and it has plenty of plants in full bloom. Visitors can enjoy a big panoramic view of the ocean from the observation tower in a sunny day.

- 🚌 About a 5-minute walk from "Hakushuhi-mae" bus stop by taking a bus from Misakiguchi Station on the Keikyu Line



Awasaki Lighthouse



9 Yokohama China Town

This China Town is regarded one of the world's largest. There are more than 600 shops including restaurants and general stores.

- 📍 Yamashitacho, Nakaku, Yokohama
- 🚌 A short walk from Motomachi-Chūkagai Station on the Minatomirai Line



10 Minato Mirai 21

Visitors can enjoy arts and culture as well as gourmet and shopping. It is also pleasant to walk around in the district. Sparkling night view is also recommended.

- 📍 Minatomirai, Nishiku, Yokohama
- 🚌 A short walk from Minatomirai Station on the Minatomirai Line

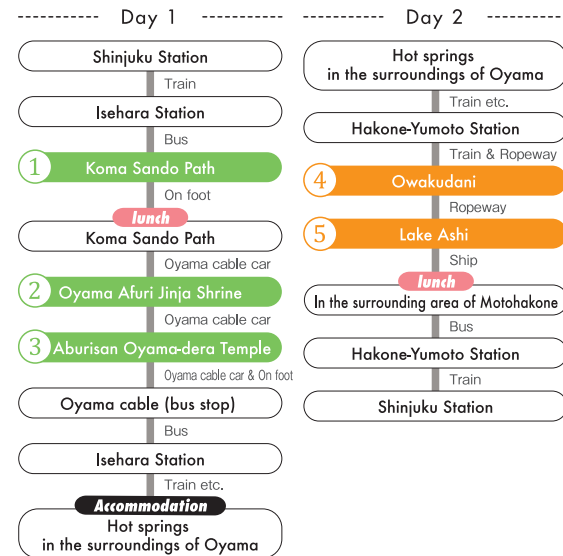
Let's travel around Kanagawa for one night stay!

OYAMA & HAKONE



The view from Oyama Afuri Jinja Shrine Shimosha which was featured in "the Michelin Green Guide Japon" as two stars

Model route



② Oyama Afuri Jinja Shrine

The name is said to come from Oyama's another name "Amefuriyama (mountains with rainfall)." The shrine is believed to have been founded around in 97 B.C..

☎ 0463-95-2006 (Oyama Afuri Jinja Shrine Shamukyoku 9:00-17:00)

🚶 A short walk from Oyama cable car Afuri-jinja Station



③ Aburisan Oyama-dera Temple

Visitors can try Kwarakenage (earthen cup throwing) to avoid bad luck. It is famous for its magnificent view of autumn leaves.

☎ 0463-95-2011 📍 724 Oyama, Isehara

🚶 About a 3-minute walk from Oyama cable car Oyamadera Station

OYAMA

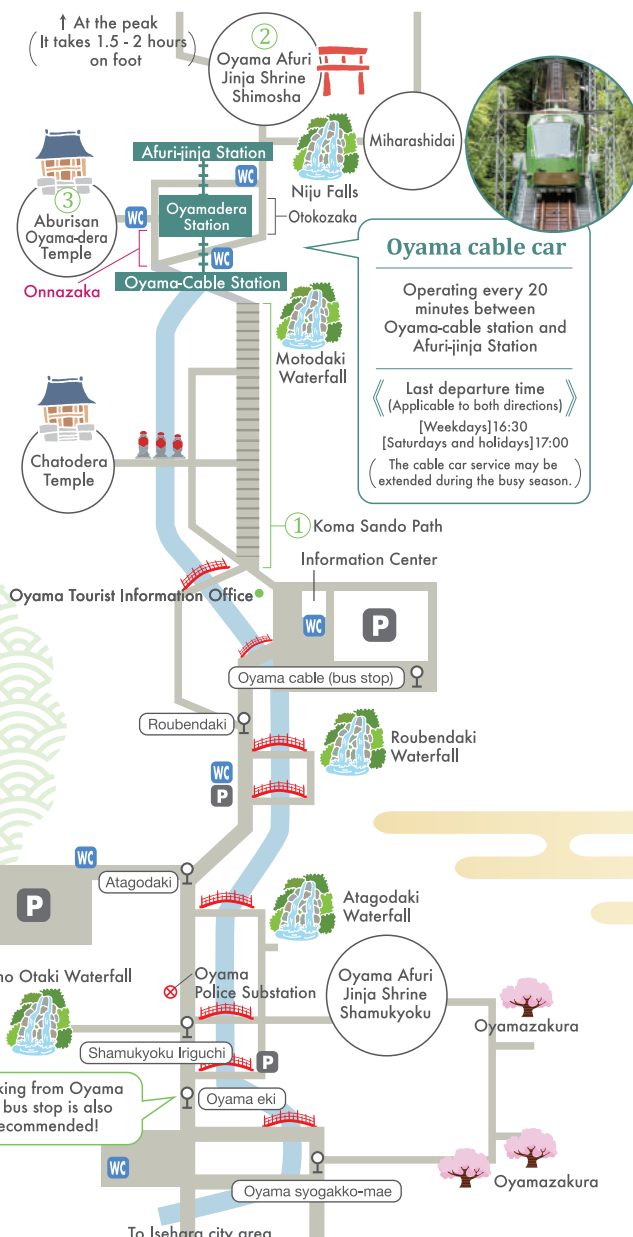
Spiritual and sacred mountain which has been the subject of mountain worship from ancient times



① Koma Sando Path

The approach leading from Oyama cable bus stop to Oyama cable station. There are many shops including souvenir stores and restaurants.

🚶 About a 2-minute walk from "Oyama cable" bus stop by taking a bus from Isehara Station on the Odakyu Line



Mt. Oyama's Pilgrimage

Ukiyo-e depicted the scenes of "Oyama Pilgrimage," where about 200,000 pilgrims visited annually at the Edo period. It was designated as Japan Heritage in 2016.

Some of the Constitutional Cultural Heritage



Oyama Koma

This famous product from Oyama is considered to be a lucky charm. Since it spins very well, it is considered to get lucky with money.

Tofu

Tofu made with fresh water of Oyama is superb. Visitors can taste those at Ryokan and tea shops on approach.



Tamagaki

Stone-made fences engraved the names of groups and dedicators are the proof that they visited and worshipped Oyama.



Nuno maneki

Hand-made towels were displayed at the front of the guesthouse where they lodged in old days while they were worshipping Oyama. Those towels are still displayed as a gesture of "hospitality" to welcome Oyama visitors.



Hot springs in Oyama area

[Atsugi City]
Higashi Tanzawa Nanasawa Onsen

Hot spring area is dotted with several comfy-looking ryokan with a magnificent view of mountain village. Visitors can enjoy taking a relaxed bath since the source of the water is lukewarm with strong alkali spring.

Hot springs are recommended after climbing down! Some hotels offer day trip bath as well as accommodation.

[Hadano City]
Tsurumaki Onsen

Famous hot water boasting for "one of the highest contain of calcium in Japan" and abundant nature. It is believed to be effective for various diseases including neuralgia, female disorders and skin diseases.

HAKONE

Theme park for sightseeing such as arts, sports and hot springs.



④ Owakudani

Visitors can enjoy watching powerful scenery of volcanic activity and grand Mt. Fuji at a short distance.

☎ 0460-85-5700 (Hakone Tourist Information Center)

🏠 Sengokuhara, Hakonemachi

🚶 A short walk from Hakone Ropeway Owakudani Station



⑤ Lake Ashi

This lake is made from caldera of Hakone volcano. Visitors can enjoy the lake on a sightseeing boat. "Sakasa Fuji (reflected image of Mt. Fuji in the water)" can be viewed from Suginamiki (an avenue of cryptomerias) street in the southern shore and is believed to be one of the most beautiful sceneries of Hakone.

☎ 0460-85-5700 (Hakone Tourist Information Center)

🏠 Motohakone, Hakonemachi

🚶 A short walk from Motohakone-kou

Let's travel around Kanagawa for one night stay!

OISO & KAMAKURA



A distant view of Oiso with white-bellied green pigeons flying colorfully

Model route

Day 1	Day 2
Tokyo Station	Oiso Town area
Train	Bus etc.
Oiso Station	⑥ Oiso Market
On foot	On foot
① Former Residence of Kinoshita family (Oiso-geihinkan)	Oiso Station
On foot	Train
② Sawada-miki Memorial Hall	Kamakura Station
On foot	On foot
lunch	lunch
In the surroundings of Oiso Station	In the surroundings of Kamakura Station
On foot	On foot
③ Shigitatsuan	⑦ Tsurugaoka Hachimangu
Bus	Train
④ Former Residence of Yoshida Shigeru	⑧ Kotoku-in / Great Buddha of Kamakura
On foot	On foot
⑤ Oiso Joyama Park	Hase Station
Bus etc.	Train
Accommodation	Tokyo Station
Oiso Town area	



⑤ Oiso Joyama Park

There are tasteful tea rooms with a Japanese atmosphere. The autumn leaves are illuminated every fall.

- ☎ 0463-61-0355
- 🏠 551-1 Kokufuhongo, Oisomachi
- 🚌 About a 3-minute walk from "Joyama koen (park) mae" bus stop by taking a bus from Oiso Station on the JR Tokaido Line



⑥ Oiso Market

About 190 different shops, including crafts or food stores, gather at the morning market at Oiso Port. And night market is held during the summer periods (from July to September).

- ☎ 0463-61-0871 (Oisomachi Commerce and Industry)
- 🕒 Open on the 3rd Sunday of the month, 9:00 – 14:00 (17:00 – 20:30 from July to September)
- 🚶 About a 10-minute walk from Oiso Station on the JR Tokaido Line

OISO Why not visit and experience mansion house and garden culture and stroll there?



① Former Residence of Kinoshita family(Oiso-geihinkan)

Western-style building with the Taisho modern atmosphere built over 100 years ago. It is a restaurant now and authentic Italian cuisine is served to taste.

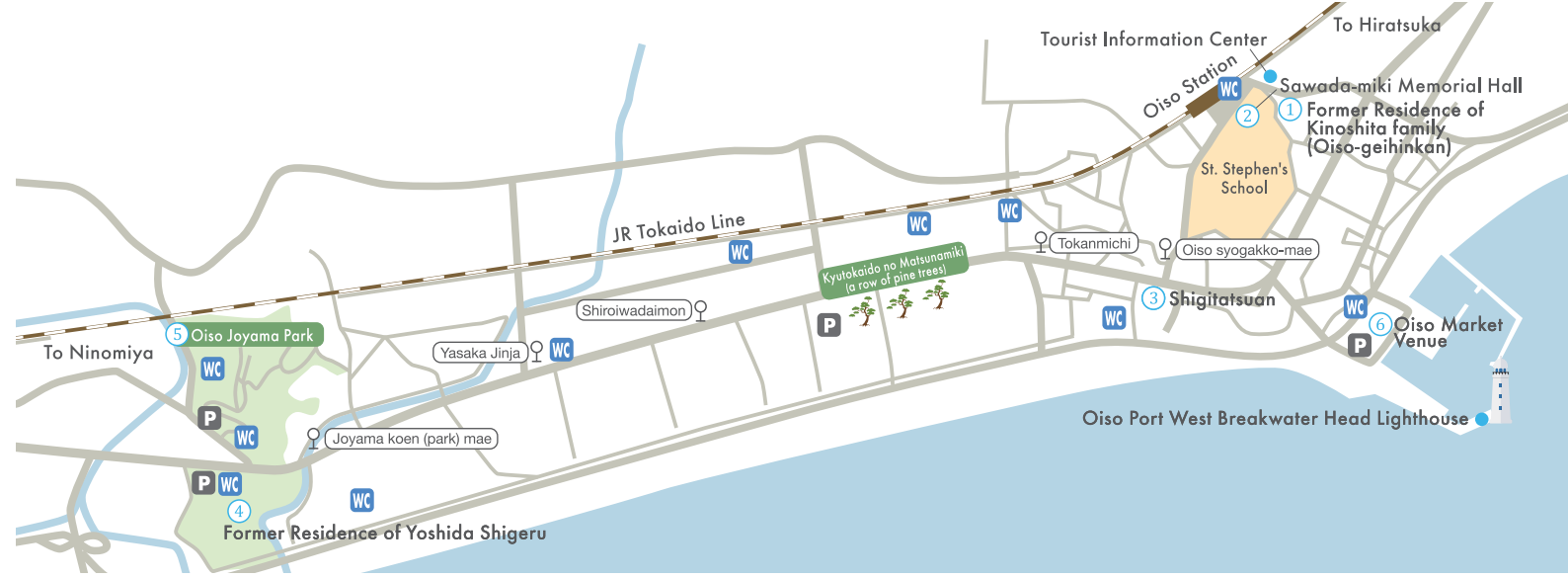
- ☎ 050-3385-0013
- 🕒 Lunch / 11:30 – 14:00 (last food order), Dinner / 17:30 – 20:00 (last food order) (closed on Wednesdays)
- 🏠 1007 Oiso, Oisomachi
- 🚶 About a 1-minute walk from Oiso Station on the JR Tokaido Line



② Sawada-miki Memorial Hall

Articles left behind by Crypto-Christians and their related goods, collected by Miki Sawada, are displayed at this museum.

- ☎ 0463-61-4888
- 🕒 10:00 – 16:00 (Closed on Mondays, New Year's holiday)
- 🏠 1152 Oiso, Oisomachi 🚶 A short walk from Oiso Station on the JR Tokaido Line
- 💰 Adult 500 JPY, Senior high school or university students 400 JPY (Adult 800 JPY, Discounted 700 JPY valid from March 1st 2019)



KAMAKURA

Visitors can get the feel of Japanese culture and history through many temples and shrines of Ancient Kamakura.



③ Shigitatsuan

It is said to be one of the three most famous seventeen-syllable verse studios.

- ☎ 0463-61-6926 🕒 9:00 – 17:00 (Closed on New Year's holiday)
- 🏠 1289 Oiso, Oisomachi
- 🚶 About a 7-minute walk from Oiso Station on the JR Tokaido Line
- 💰 Adult 300 JPY, Child 150 JPY



④ Former Residence of Yoshida Shigeru

The mansion house where Shigeru Yoshida, the former Prime Minister, stayed in his last days.

- ☎ 0463-61-4700 (Oiso Kyodosiryokan)
- 🕒 9:00 – 16:30 (Entry is allowed until 16:00) (Closed on every Monday, the 1st day of the month and New Year's holiday)
- 🏠 418 Nishikoiso, Oisomachi
- 🚶 About a 5-minute walk from "Joyama koen (park) mae" bus stop by taking a bus from Oiso Station on the JR Tokaido Line
- 💰 Adult 500 JPY, Junior or senior high school students 200 JPY



⑦ Tsurugaoka Hachimangu

The main shrine was built at the Edo period with its typical style. It is visited by many visitors throughout the year.

- ☎ 0467-22-0315 🕒 6:00 – 20:30
- 🏠 2-1-31 Yukinoshita, Kamakura
- 🚶 About a 10-minute walk from Kamakura Station on the JR Yokosuka Line



⑧ Kotoku-in / Great Buddha of Kamakura

Famous for the Great Buddha of Kamakura which is over 13-meter high including its pedestal. Visitors can also have a look at its body. (Admission 20 JPY)

- ☎ 0467-22-0703
- 🕒 [April - September] 8:00 – 17:30, [October - March] 8:00 – 17:00 (Entry is allowed up to 15 minutes before the gate is closed)
- 🏠 4-2-28 Hase, Kamakura
- 🚶 About a 7-minute walk from Hase Station on the Enoshima Electric Railway
- 💰 Adult 200 JPY, Elementary school student 150 JPY



Trains & Roads, Locator map

鉄道 & 道路 アクセスマップ

Train 鉄道

▶ 電車でのおよその移動時間 Approximate transit time by train.

新宿 Shinjuku	95 min.	三崎口 Misakiguchi
東京 Tokyo	85 min.	
品川 Shinagawa	65 min.	
羽田空港 Haneda Airport	80 min.	
	110 min.	
新宿 Shinjuku	60 min.	伊勢原 Isehara
東京 Tokyo	75 min.	
品川 Shinagawa	80 min.	
羽田空港 Haneda Airport	90 min.	
	90 min.	
	60 min.	
新宿 Shinjuku	70 min.	大磯 Oiso
東京 Tokyo	65 min.	
品川 Shinagawa	60 min.	
羽田空港 Haneda Airport	70 min.	

Bus バス

▶ バスでのおよその移動時間 Approximate transit time by bus.

三崎口駅 Misakiguchi Station	15 min.	三崎港 Misaki-kou (Misaki port)
	30 min.	城ヶ島 Jogashima
伊勢原駅北口 North Exit of Isehara Station	25 min.	大山ケーブル Oyama cable
	20 min.	日向薬師 Hinatayakushi
大磯駅 Oiso Station	5 min.	城山公園前 Joyama koen (park) mae
	10 min.	国府新宿 Kokufu-shinshuku

Related sites 関連サイト

観光 かながわ NOW

神奈川県公式観光サイト

<http://www.kanagawa-kankou.or.jp/>

観光かながわNOWでは、神奈川県の様々な魅力を日々発信中です。

Kankou Kanagawa NOW: Introducing daily the diverse tourist attractions of Kanagawa.



日本語のみ対応
Japanese only



<https://trip.pref.kanagawa.jp/>

横浜・鎌倉・箱根を中心に、神奈川の人気の観光情報を発信しています。

Transmitting the appeal of popular attractions in Kanagawa with focus on Yokohama, Kamakura, and Hakone.



外国語対応
Foreign languages
available



Oyama, the place of faith and outing for the Edo citizens, has been designated as Japan Heritage. Why not get the feel of the ancestors while staying at the exact place which has been loved by so many people since old days?

日本遺産に認定された、江戸庶民の信仰と行楽の地・大山。古から人々に愛された地で先人の思いを体感してみて。

伊勢原市公式イメージキャラクター
フルリン

紅葉で有名ですが、新緑の美しい季節もおおすすめです！
豊かな自然とふれあいながらハイキングも楽しめます♪

大山地域のお問合せ 伊勢原市経済環境部商工観光課 tel.0463-94-4711

大山

Oyama

KANAGAWA

箱根 Hakone

Visitors can enjoy arts and sports in the magnificent landscape and take a relaxed bath. Hakone is like a theme park for sightseeing.

雄大な自然の中で芸術やスポーツを楽しむ、温泉でゆったり。箱根は観光のテーマパークです。



大涌谷 Owakudani

Visitors can enjoy watching powerful scenery of volcanic activity and grand Mt. Fuji at a short distance.

火山活動を間近に体感できる迫力ある景色や、雄大な富士山を望むことができます。

☎ 0460-85-5700 (箱根町総合案内所)

📍 箱根町仙石原 🚶 箱根ロープウェイ大涌谷駅から徒歩すぐ



芦ノ湖 Lake Ashi

This lake is made from caldera of Hakone volcano. Visitors can enjoy the lake on a sightseeing boat. "Sakasa Fuji (reflected image of Mt. Fuji in the water)" can be viewed from Suganamiki (an avenue of cryptomerias) street in the southern shore and is believed to be one of the most beautiful sceneries of Hakone.

箱根火山のカルデラの中にある湖です。遊覧船等でも楽しめます。南岸の杉並木街道から眺める「逆さ富士」は箱根の絶景の一つです。

☎ 0460-85-5700 (箱根町総合案内所)

📍 箱根町元箱根 🚶 元箱根港から徒歩すぐ

大磯

Oiso

It is a nostalgic town with beautiful beaches where many writers and politicians have chosen as their favorite first or second residence.

多くの文人や政治家が避暑地として別荘や邸宅を築き愛されてきた、美しい海岸を有するレトロな町です。



©2011 OISOMACHI

大磯町観光キャラクター
いそべえ

大磯地域のお問合せ

大磯町産業環境部産業観光課 tel.0463-61-4100



Oiso's Sagicho Festival 大磯の左義長

大磯の左義長(さぎちょう)と呼ばれる火祭りは、重要無形民俗文化財に指定されています!!

神奈川の魅力新発見

New discovery of Kanagawa's attractions

神奈川県では「新たな観光の核」として、城ヶ島・三崎、大山、大磯の3地域を認定し、海外にも強力に発信できる「新たな観光の核づくり」を進めています。

Kanagawa Prefecture has authorized Jogashima & Misaki, Oyama, and Oiso as "New Bases for Tourism" to promote as tourist destinations not only within Japan but also overseas.

自然豊かで魅力的な
観光スポットが盛りだくさん!
Kanagawa has numerous fascinating
attractions that are filled with natural beauty!

発行 神奈川県国際文化観光局観光部観光企画課 tel.045-210-5767 2019年2月発行

横浜 Yokohama

A modern and sophisticated port town that includes Minato Mirai 21 and Yokohama China Town, with great shopping opportunities and night views. Although 150 years has passed since its opening, it still offers countless attractions including many historical remains.

近代的で洗練された港町で、ショッピングや夜景などを楽しむことができます。開港から150年以上が経ちましたが、当時の歴史を偲ぶ遺構も多く、見どころが尽きません。

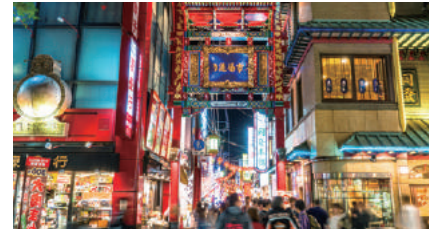


みなとみらい21 Minato Mirai 21

Visitors can enjoy arts and culture as well as gourmet and shopping. It is also pleasant to walk around in the district. グルメやショッピングを楽しめ、アートや文化にも触れることができます、散歩するだけでも楽しめる地区です。

📍 横浜市区みなとみらい

🚶 みなとみらい線みなとみらい駅から徒歩すぐ



横浜中華街 Yokohama China Town

This China Town is regarded one of the world's largest. There are more than 600 shops including restaurants and general stores.

世界最大級の規模を誇る中華街。飲食店や雑貨店など、600軒以上の店が軒を連ねます。

📍 横浜市中区山下町

🚶 みなとみらい線元町・中華街駅から徒歩すぐ

城ヶ島・三崎

Jogashima
& Misaki

Port town with abundant nature, great access from central Tokyo and also enjoyable outdoor sports for visitors. There are so many attractive reasons such as superb view, delicious seafood and so on.

アウトドアを楽しめ、都心からすぐ行ける自然豊かな港町。絶景やおいしい海の幸もあり、魅力がいっぱいです。

A starlit sky seen from Umanose-Domon
馬の背洞門から見た星空



城ヶ島は
星が綺麗に見える
といわれています!
星を見に、
ぜひお越しください♪

三浦ご当地キャラクター
三浦ツナ之介

城ヶ島・三崎地域のお問合せ

三浦市経済部観光商工課 tel.046-882-1111

鎌倉 Kamakura

Ancient Kamakura has been nurturing its history and culture over time. Visitors can get the feel of Japanese culture and history through many temples and shrines.

時代の変化とともに歴史と文化を紡いできた古都・鎌倉。多くの神社仏閣があり、日本の文化や歴史を肌で感じられます。



鶴岡八幡宮 Tsurugaoka Hachimangu

The main shrine was built at the Edo period with its typical style. It is visited by many worshippers throughout the year.

御本殿は代表的な江戸建築として知られています。年間を通して多くの参拝者が訪れます。

☎ 0467-22-0315

🕒 6:00~20:30

📍 鎌倉市雪ノ下2-1-31

🚶 JR横須賀線鎌倉駅から徒歩約10分

鎌倉大仏殿高德院 Kotoku-in / Great Buddha of Kamakura

Famous for the Great Buddha of Kamakura which is over 13-meter high including its pedestal. Visitors can also have a look at its body. (Admission 20 JPY)

台座を含む高さが13mを超える大仏が有名です。

大仏胎内でも拝観できます。(拝観料20円)

☎ 0467-22-0703

🕒 [4~9月] 8:00~17:30, [10~3月] 8:00~17:00

(入場は閉門15分前まで)

📍 鎌倉市長谷4-2-28

🚶 江ノ島電鉄長谷駅から徒歩約7分 🎫 一般200円 小学生150円

江ノ電 Enoden

Enoden (Enoshima Electric Railway) is an essential part of Kamakura. Enjoy beautiful views through a train window.

鎌倉を語るのに欠かせない江ノ電。

車窓からの美しい風景を楽しんで。

